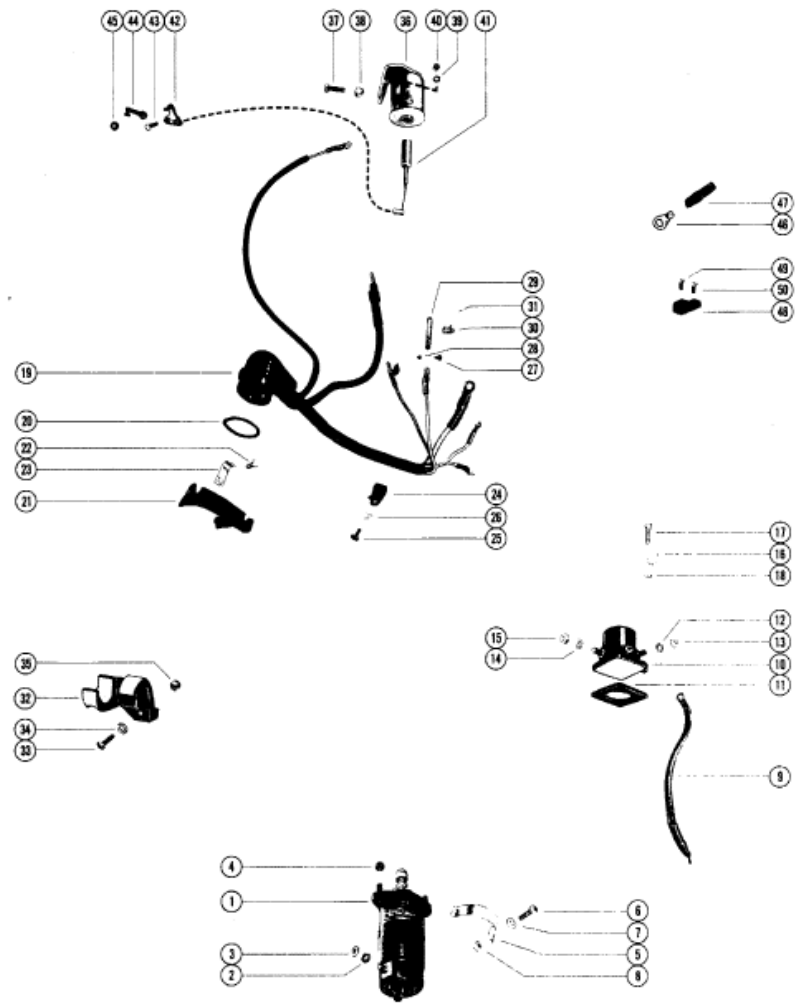


Serial Nbr Range: 0B Misc. (1985 and Below)



Parts List						
Ref	Class	Part	Description	Qty	Comment	Footnote
-	50	47216A 1	ELECTRIC STARTER MOTOR KIT	1,	SERIAL #2296267 THRU SERIAL	
-	50	47216A 2	ELECTRIC STARTER MOTOR KIT	1,	SERIAL #2827677 THRU SERIAL	
-	50	47216A 3	ELECTRIC STARTER MOTOR KIT	1,	SERIAL #3537531 AND UP	
1	50	47216	STARTER MOTOR	1,1	SEE MERC 200 HEAVY DUTY W	
2	13	26992	LOCKWASHER, STARTER MOT	1,1		
3	11	20088	NUT, STARTER MOTOR TERM	1,1		
4	11	20361	NUT, STARTER MOTOR STUD	2,2		
5	54	47993	CLAMP, STARTER MOTOR FAS	1,1		
6	10	22483	SCREW, STARTER MOTOR CL	1,1		
7	12	46897	WASHER, STARTER MOTOR C	1,1		
8	11	20361	NUT, STARTER MOTOR CLAMP	1,1		
9		25596	CABLE, JUMPER - STARTER MI	1,		
9		54651	CABLE, JUMPER - STARTER MI	1,		
9	84	65063	CABLE, JUMPER - STARTER MI	1,		
10		47886	SOLENOID, STARTER	1,1		
11	27	47829	GASKET, STARTER SOLENOID	1,1		
12	13	26996	LOCKWASHER, STARTER SOL	2,2		
12	13	26996	LOCKWASHER, STARTER SOL	1,		
13	11	20645	NUT, STARTER SOLENOID TE	2,2		
14	13	20202	LOCKWASHER, STARTER SOL	2,2		
15	11	20083	NUT, STARTER SOLENOID TE	2,2		
16	54	47830	CLAMP, NYLON - STARTER SO	2,2		
17	10	45862	SCREW, STARTER SOLENOID	2,2		
18	11	46438	NUT, STARTER SOLENOID CL	2,2		
19		47929	WIRING HARNESS, INTERNAL	1,		
19		57022	WIRING HARNESS, INTERNAL	1,		
19	84	64997	WIRING HARNESS, INTERNAL	1,		
20	24	28975	SPRING, GARTER - INTERNAL	1,1		
21	54	47831	CLAMP, INTERNAL WIRING HA	1,		
21	54	52876	CLAMP, INTERNAL WIRING HA	1,1		
22	10	20189	SCREW, LEAD WIRE AND HAR	2,2	(3/4")	
22	10	61802	SCREW, LEAD WIRE AND HAR	2,	(7/8")	
23	54	33361	CLAMP, LEAD WIRE FASTENIN	2,2		
24	54	23567	CLAMP, WIRING HARNESS TO	1,1		
25	10	40663	SCREW, WIRING HARNESS CL	1,1		
25	10	31206	SCREW, WIRING HARNESS CL	1,		
26		22789	"D" WASHER, WIRING HARNE	1,1		
27	10	36046	SCREW, LEAD ATTACHING	1,		
28	11	62590	NUT, LEAD ATTACHING SCRE	1,		
29	85	64080 1	INSULATOR, LEAD COVERING	1,		